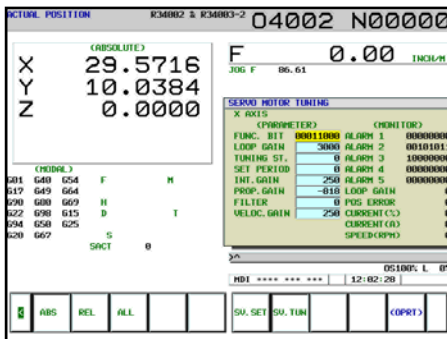


Automation Consultants Training Classes

Fanuc Advanced Troubleshooting

This course provides the advanced training needed by CNC service technicians to understand the key areas of a Fanuc control. We use a hands-on approach to modify ladder logic programs, diagnose errors, and adjust parameter settings. We will be using a two axes simulator equipped with a Fanuc 32i-series control and alpha-i series drives. In addition, you will be using the Fanuc NCGuide software to learn screen navigation and troubleshooting techniques.



Some of the topics that will be covered include:

Establishing servo parameter settings.

Enabling and disabling of scale feedback system.

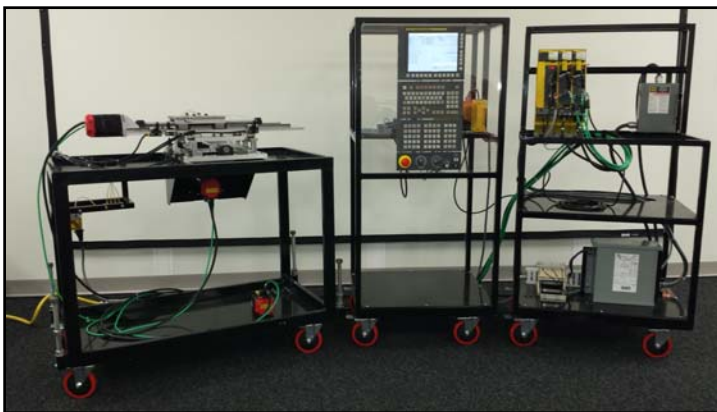
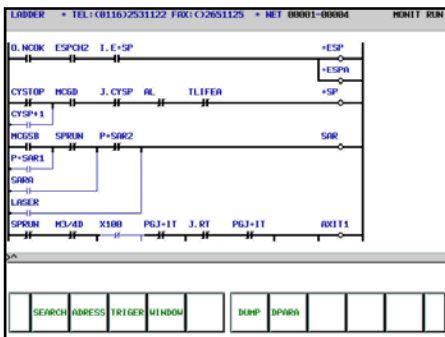
Parameter details.

Data Registers.

Creating M-Codes, timers and alarms.

Adding additional I/O to a Fanuc

Using ladder logic and diagnostics.



All of our classes can be tailored to the specific issues that you wish to address. In many cases, simulation software can be used to recreate the actual machines used on your shop floor. This allows the students to diagnose errors using your ladder logic.

This is a hands-on class. The students will use what they have learned to debug problems introduced into the simulator. At the end of the class the students will be broken up into teams. Each team will work together to create errors that are introduced into the simulator. They then swap positions and debug the errors.

Training is available on-site or at one of our facilities in:
Louisville, KY Cleveland, OH Detroit, MI. Nashville, TN

Automation Consultants

PO Box 577 Floyds Knobs, IN. 47119

www.shoprag.com

502-552-4995

info@shoprag.com