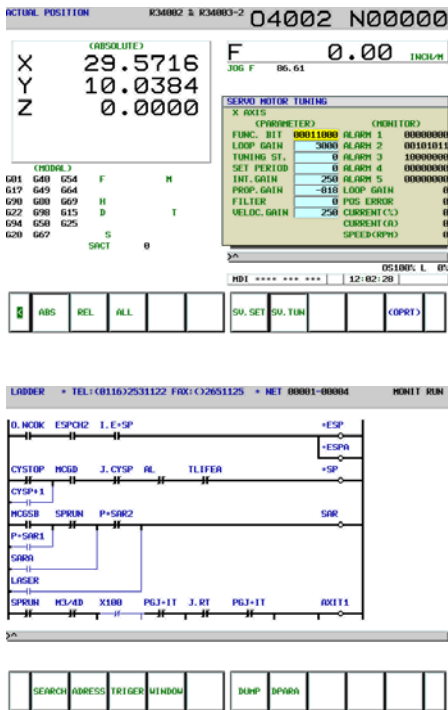


Automation Consultants Training Classes

Fanuc Advanced Troubleshooting

This course provides the advanced training needed by CNC service technicians to fully understand the workings of a Fanuc controlled CNC machine. The students will use a hands on approach to create ladder logic programs, install and remove scale feedback systems and modify parameter settings. The students will be using a simulator equipped with a Fanuc i-series control. This is a fully functional machine using alpha series drives, motors and scale feedback.

Some of the topics that will be covered include:



Establishing servo parameter settings.

Enabling and disabling of scale feedback system.

Parameter details.

Data Registers.

Creating M-Codes, timers and alarms.

Adding additional I/O to a Fanuc control.

Using ladder logic and diagnostics.

Using custom macros for troubleshooting.



In this class the students are divided up into teams. These teams will work together to create errors that are introduced into the simulator. Each team will then debug the other teams errors. All of our classes can be tailored to the specific issues that you wish to address. This class is available at your facility or at our training center in Louisville, KY.

Automation Consultants
PO Box 577

Floyds Knobs, IN. 47119

502-552-4995 812-923-5396 (fax)

www.shoprag.com

info@shoprag.com